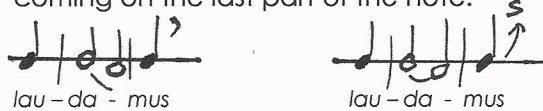


## CHORUS INSTRUCTIONS for Zoltán Kodaly: Budavari Te Deum

- Chorus size: 70-120 singers, SATB divisi with a strong low-bass section and fuller soprano sections to create an evenly balanced sound.
- Preferred edition of the choral score: Universal Edition UE 10849 (piano/vocal score).
- All markings from the Master Choral Score should be copied by each singer before the first rehearsal (available online).
- Latin pronunciation: Central European (rather than the commonly used Liturgical Latin). Thus: "pacem" is pronounced "patzem" not "pachem";  
"angeli" = "angheli", not "andjeli"
- All tempos as marked in the score
- Final consonants fall on the following rest unless indicated as coming on the last part of the note:



- The strength of the consonant is in the mood of the passage.
- Sopranos and altos: clear, centered tone with limited/narrow vibrato (the oratorio, not the operatic sound).

\*\*\*